



Photographic images are property of GUTEX archive

GUTEX Thermosafe-homogen, a universal insulating board with single-ply construction and homogenous cross section, provides superb protection against the heat in summer and loss of heat in winter.

Technical Data	Thermosafe-homogen	
Joint type	Butted	Rebate
Thickness (mm)	40/60/80/ 100/120	140/160/ 180/ 200/220/240
Length x width (mm)	1200 x 625	1200 x 625
Actual coverage, length x width (mm)		1185 x 610 (0.712m ²)
Square metres per board (m ²)	0.75	0.75
Weight per board (kg)	3.3/4.95/6.6/ 8.25/9.9	11.55/13.2/ 14.85/16.5/ 18.5/19.8
Weight per m ² (kg)	4.4/6.6/8.8/ 11/13.2	15.4/17.6/19.8/22 24.2/26.4
Boards per pallet	112/70/56/42/ 36	32/28/24/22/20/ 18
Square metres per pallet (m ²)	84/52.5/42/ 31.5/27	24/21/18/16.5/ 15.0/13.5
Weight per pallet (kg)	430/ from 60 mm 390	
Bulk density (kg/m ³)	110	110
Vapour diffusion factor (μ)	4	4
sd-value (m)	0.16/0.24/0.32/ 0.40/0.48	0.56/0.64/0.72/ 0.80/0.88/0.96
Compressive stress/ strength (kPa)	50	50
Tensile strength perpendicular to board surface (kPa)	5	5
Air flow resistivity (kPa s/m ²)	100	100
Short-term water absorption (kg/m ²)	≤ 2.0	≤ 2.0
Specific heat capacity (J/kgK)	2100	2100
Fire reaction Euro Class as per DIN EN 13501-1	E	E
European Union		
Nominal thermal conductivity λ _D (W/mK)	0.038	0.038
Nominal thermal resistance R _D (m ² K/W)	1.05/1.55/2.10/ 2.60/3.15	3.65/4.20/4.70/ 5.25/5.75/6.30

Designation: WF-EN13171-T4-WS 2.0-CS(10/Y)50-MU4-AFr100

German disposal category: A2 (treated wood; without non-halogenated organic compounds); code number as per AVV:030105; 170201

Composition

- Manufactured from untreated Black Forest spruce and fir
- Additives:
 - 4.0 % polyurethane resin (binder)
 - 0.5% paraffin (hydrophobic agent)

Applications

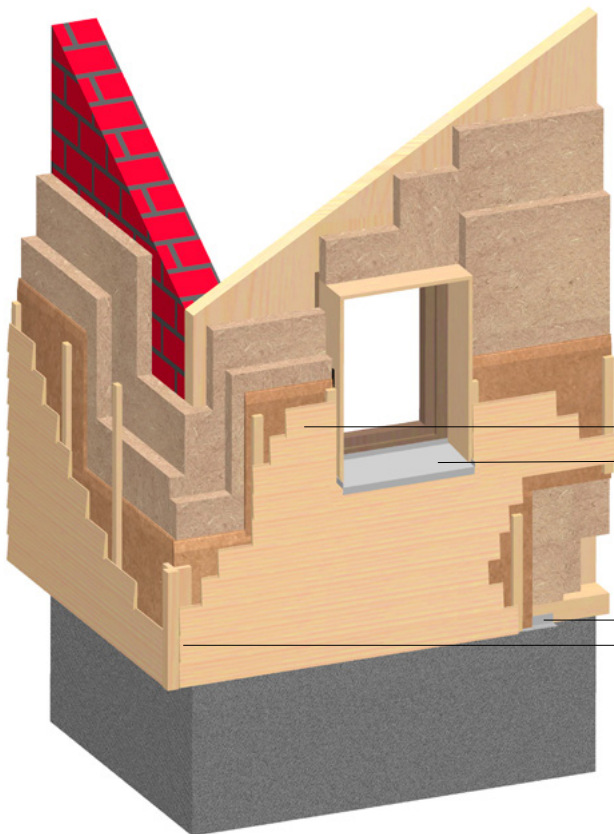
- Above rafter insulation with full surface contact to substrate
- Between rafter insulation
- Interior insulation of floors
- Insulation of timber frame and prefab modular house sections
- Insulation of top storey ceilings
- Insulation of solid wood walls (e.g. over sheathing) and masonry walls (vented facades)
- Lightweight partition walls

Advantages

- Optimum thermal insulation
- Superior thermal storage capacity provides outstanding insulation against heat in the summer and cold in winter.
- Improves acoustic insulation
- Regulates humidity
- Water vapour diffusion permeable
- Lightly treated with a hydrophobic agent
- Quick and easy installation
- Suitable substructure in GUTEX Thermowall composite thermal insulation system. Refer to the GUTEX brochure "External Thermal Insulation Composite System".
- Wood is a sustainable, recyclable natural resource
- Made in Germany
- Biologically safe (natureplus® certified)

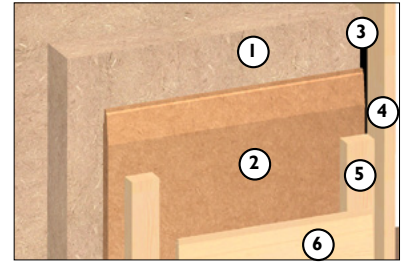
Installation

- Store and install this product dry.
- Offset the joints if installing multiple layers.
- Avoid cross joints.
- Install with full surface contact to substrate
- Use only with GUTEX Multiplex-top, GUTEX Ultratherm (above rafter insulation) or GUTEX Multitherm (vented facades).
- Do not exceed board thickness of 60 mm under wet screed. For further floor constructions, see GUTEX Thermosafe-wd and GUTEX Thermofloor.
- For best cutting results, use a GUTEX saw or GUTEX blades for jigsaws or circular saws and a vacuum fitting.
- Vacuum off the dust in accordance with applicable workplace safety regulations or practices.



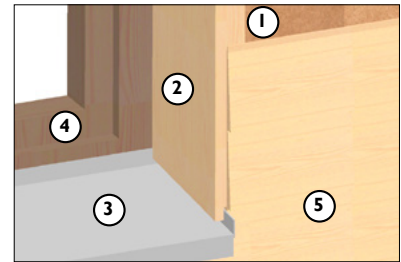
Vented Facade Detail

Reveal



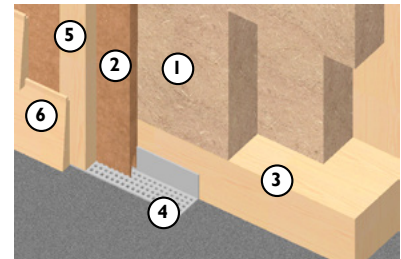
- ① GUTEX Thermosafe-homogen
- ② GUTEX Multiplex-top/GUTEX Ultratherm/
GUTEX Multitherm
- ③ Sealing strip
- ④ Window jamb
- ⑤ Cross battens/Venting
- ⑥ Timber cladding

Window Sill



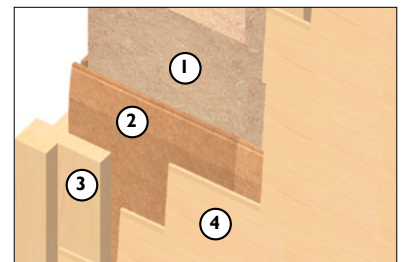
- ① GUTEX Multiplex-top/GUTEX Ultratherm/
GUTEX Multitherm
- ② Window jamb
- ③ Window sill
- ④ Window frame
- ⑤ Timber cladding

Foundation/Wall



- ① GUTEX Thermosafe-homogen
- ② GUTEX Multiplex-top/GUTEX Ultratherm/
GUTEX Multitherm
- ③ Plate
- ④ Air grate
- ⑤ Cross battens/Venting
- ⑥ Timber cladding

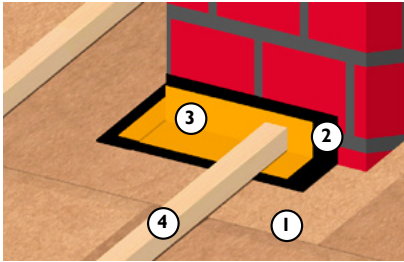
Corner/Wall



- ① GUTEX Thermosafe-homogen
- ② GUTEX Multiplex-top/GUTEX Ultratherm/
GUTEX Multitherm
- ③ Corner bead
- ④ Timber cladding

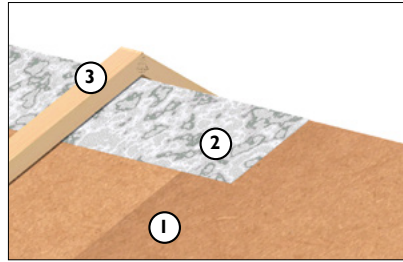
Above Rafter Insulation Detail

Roof Interruptions



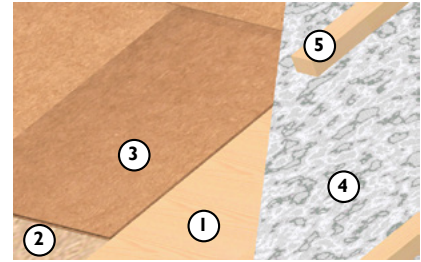
- ① GUTEX Multiplex-top/GUTEX Ultratherm
- ② GUTEX Primer
- ③ GUTEX Joint Tape
- ④ Cross battens

Ridges

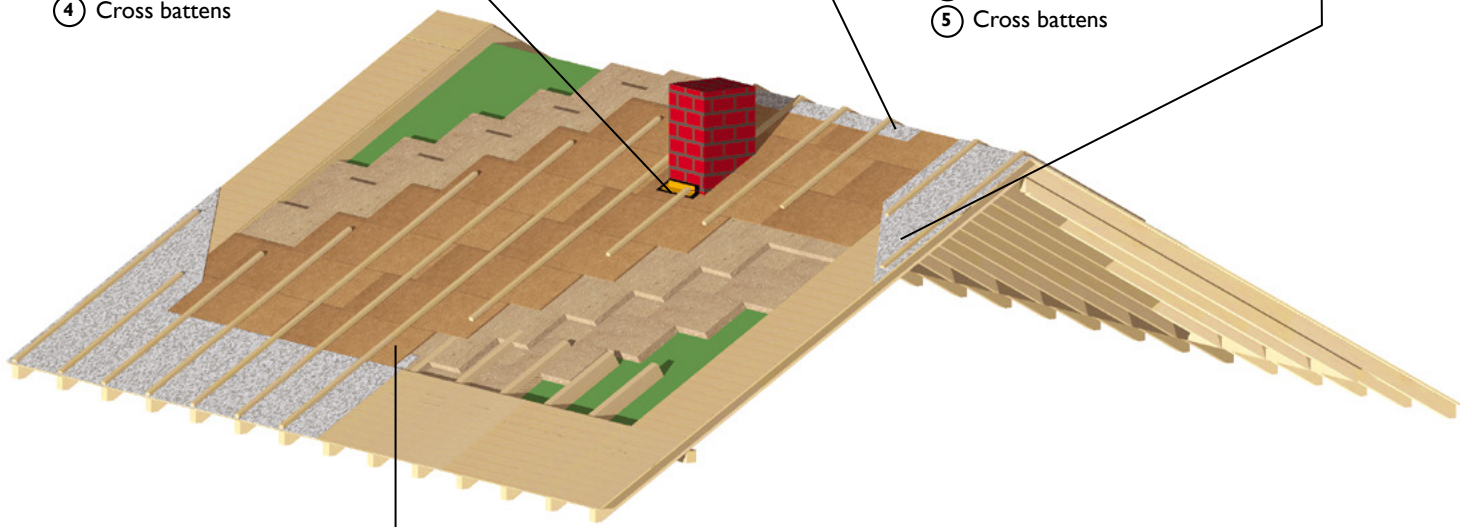


- ① GUTEX Multiplex-top/GUTEX Ultratherm
- ② Vapour permeable roofing felt
- ③ Cross battens

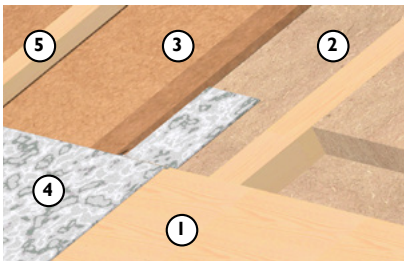
Gable Ends



- ① Sheathing of exterior overhang
- ② GUTEX Thermosafe-homogen
- ③ GUTEX Multiplex-top/GUTEX Ultratherm
- ④ Vapour permeable roofing felt
- ⑤ Cross battens

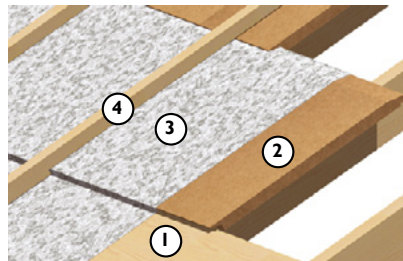


Eaves Variation 1



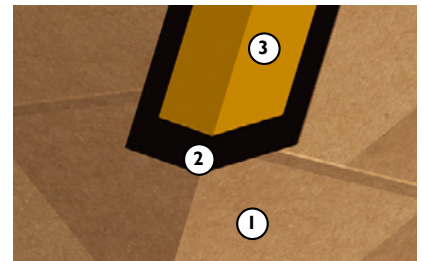
- ① Sheathing of exterior overhang
- ② GUTEX Thermosafe-homogen
- ③ GUTEX Multiplex-top/GUTEX Ultratherm
- ④ Vapour permeable roofing felt
- ⑤ Cross battens

Eaves Variation 2



- ① Sheathing of exterior overhang
- ② GUTEX Multiplex-top/GUTEX Ultratherm
- ③ Vapour permeable roofing felt
- ④ Cross battens

Valleys



- ① GUTEX Multiplex-top/GUTEX Ultratherm
- ② GUTEX Primer
- ③ GUTEX Joint Tape

All rights reserved. Henselmann GmbH + Co KG is not liable for any damage resulting from error or misprinting. The technical data provided herein is subject to change. Although all of the information was current at the time of its publication, the publication of superseding

information renders the old information invalid.

The suitability of this product for applications not specified in this data sheet is not guaranteed. Warranty and liability claims are subject to the terms of GUTEX's General Terms of Business.



NATURALLY MADE FROM WOOD

GUTEX Holzfaserplattenwerk, Gutenberg 5, D-79761 Waldshut-Tiengen, Phone: ++49(0)7741/6099-0, Fax: ++49(0)7741/6099-57, E-mail: info@gutex.de, www.gutex.de