




Photos: GUTEX Archives, HUF-Maison

GUTEX Thermoflex is a flexible wood fibreboard that is designed for use between rafters and in timber-framed walls.

Technical data	Thermoflex
Joint	Butted
Thickness (mm)	40/50/60/80/100/120/140/160/ 180/200/220/240
Length x width (mm)	1350 x 575
Square metres per board (m ²)	0.78
Weight per board (kg)	1.55/1.94/2.33/3.11/3.88/4.66/ 5.43/6.21/6.99/7.76/8.54/9.32
Weight per m ² (kg)	2/2.5/3/4/5/6/7/8/9/10/11/12
Pieces per packet	8/9/6/4/3/3/2/2/2/2/2/2
Packets per pallet	14/10/12/14/14/12/16/14/ 12/10/10/8
Boards per pallet	112/90/70/56/42/36/32/28/ 24/20/20/16
Square metres dimensions per pallet (m ²)	86.94/69.86/54.34/43.47/32.60/ 27.95/24.84/21.74/18.63/15.53/ 15.53/12.42
Weight per pallet (kg)	200
Bulk density (kg/m ³)	~50
Vapour diffusion factor (μ)	2
sd-value (m)	0.08/0.10/0.12/0.16/0.20/0.24/ 0.28/ 0.32/0.36/0.40/0.44/0.48
Air flow resistivity (kPa s/m ²)	5
Specific heat capacity(J/kgK)	2100
max. operating temperatur	100°C
Fire reaction rating as per EN 13501-1 (European Classification)	E

 European Union	
Thermal conductivity λ_D (W/mK)	0.036
Thermal conductivity R_D (m ² K/W)	1.10/1.35/1.65/2.20/2.75/3.30/ 3.85/4.40/5.00/5.55/6.10/6.65



Designation: WF-EN13171-T3-TR1-MU2-AF:5

German disposal category:A2 (treated wood; without non-halogenated organic compounds)

Code number as per AVV:030105; 170201

Composition

- Softwood obtained using sustainable forestry practices
- Additives:
 - 6 % Polyolefin binding agent
 - 8 % Ammonium polyphosphate compound as flame retardant

Applications

- Timber frame, post and beam interior and exterior wall structures
- Between rafter insulation
- Ceiling insulation
- Partitions/ drywall structures

Advantages

- Inherent elasticity makes it extremely adaptable
- Provides excellent thermal insulation
- Superior thermal storage capacity provides outstanding insulation against heat in the summer and cold in winter.
- Improves acoustic insulation
- Quick and easy installation
- Regulates humidity
- Water vapour diffusion permeable
- Wood is a sustainable, recyclable natural resource
- Biologically safe

Installation

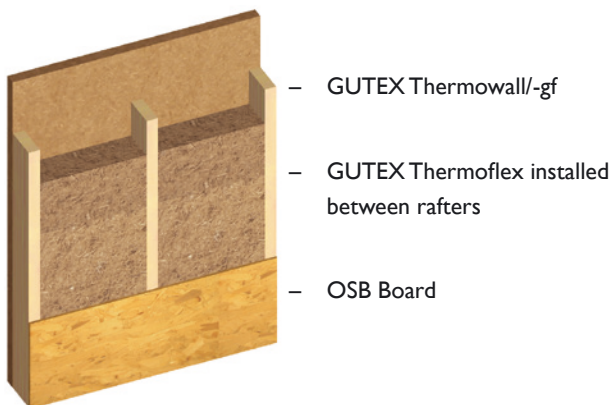
General

- Store and install this product dry.
- Protect this product against moisture.
- Do not stack the pallets one upon another.
- Cut with power handsaw, jigsaw or GUTEX Thermoflex knife.
- Use either masonry or metal drill at highest rpm.
- A hole saw may be used to cut holes for flush electrical sockets or holes for pipes.
- GUTEX Thermoflex withstands temperatures up to 100°C also for longer periods. Avoid open fire. It is recommended to encapsulate local heat sources (e.g. build-in lights)
- Vacuum off the dust in accordance

Between Wood Studs or Joists

- Cut oversized in both length and width (refer to table on next page) and wedge into place.
- Oversized dimensions ensure tight joints.
- For best sound insulation performance, fill wall spaces with GUTEX Thermoflex interior up to 80 percent instead of 100 percent.
- To minimise waste, two pieces can be wedged between the uprights etc., but make sure the pieces have the appropriate oversize.

Example



Cramping

Board Thickness	Maximal Board Width
40 mm	450 mm
50 mm	475 mm
60 mm	500 mm
80 mm	565 mm
100 mm	600 mm
120 mm	650 mm
140 mm	700 mm
160 mm	750 mm
180 mm	800 mm
200 mm	850 mm
220 mm	900 mm
240 mm	950 mm

- Depending on the construction, the state of the rafters/ joists as well as the roof pitch, you may have to adjust the above figures by increasing or decreasing them slightly.
- We suggest cutting the insulation $\geq 1\%$ the width of the cavity and the overall length of the space.
- Sheets installed in roofs or ceilings have to be secured within three days to prevent them from dropping out of their respective structure.

Between Metal Studs

Stud Width	Board Thickness
50 mm	40 mm
75 mm	60 mm
100 mm	80 mm
125 mm	100 mm

- The metal studs are flat on one side and u-shaped on the other side to hold the board. With the exception of the very last upright, all of the uprights (studs) are installed with their u-shaped openings pointing in the same direction. The last stud installs, so that it faces the opposite direction. The board that fits into this upright must be installed first.
- Insert the insulating board, position the stud, and fix in place.
- Install the remainder of the boards.

All rights reserved. GUTEX Holzfaserplattenwerk H. Henselmann GmbH + Co KG shall not be held liable for any damage resulting from error or misprinting. The technical data provided herein is subject to change. Although all of the information herein was up to date at the time of its publication, the publication of superseding information renders the old information invalid.

The suitability of this product for application not specified in this data sheet is not guaranteed. Warranty and liability claims are subject to the terms of Gutex's General Terms of Business.



NATURALLY MADE FROM WOOD